

Electric Riveter 4.8 INSTRUCTION MANUAL

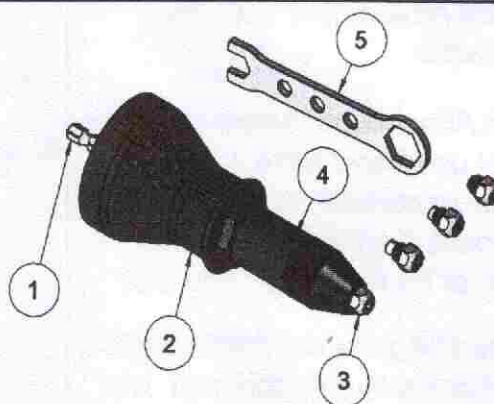


Technical Data

Riveter Model No.	ERIA-4.8
Dimensions	300L x 220H x 68W mm
Net Weight	1.7Kg= 3.74 lbs
Operating Torque	90N.m. = 66.4 ft/lbs
Total Stroke:	26mm
Speedy:	Finishing a set within 3 seconds
Patented in :	Germany/China/Japan

Assembling and Using Before first Use

1. Please read all safety instructions!
2. Remove the unit and the accessory out of the packaging.
3. Keep packaging materials out of reach of children.
4. There is risk of suffocation.



1	Hex Shank	1/4 (6.35 mm)
2	Housing	PA+GF
3	Nosepiece	2.4, 3.2, 4.0, 4.8mm
4	Sight Window	Blind Rivet Loading
5	Wrench	2PC

Safety Note

*Please note the following safety notes to avoid malfunctions, damage or physical injury

*Please observe all safety notes of the used Nut Attachment

*Always switch off the driving tool and pull the power plug before maintaining the Nut attachment, e.g. changing the nosepieces or when not in use.

*Only use the Nut Attachment as indicated in this manual for setting blind Nuts. The Nut Attachment is designed for continuous, professional use.

*Always secure the work piece.

*Do not wear loose, clothing or jewellery. Tie up hair or clothing cannot get into moving parts.

*Persons with limited physical, sensorial or mental abilities are not allowed to use the tool, unless they are supervised for their safety by a qualified person or are briefed by the responsible person how to use the Nut Attachment .

*Only use the Nut Attachment with the included nosepieces.

*Should the Nut Attachment become damaged do not use it and have it repaired by a professional or contact our customer support department. Do not disassemble the Nut Attachment or try repairing it yourself.

*Do not continue using the Nut Attachment if it was damaged or the Nut Attachment was dropped down. Please contact our customer support service.

Operation instructions

1. Secure the work piece. Drill the holes into the work piece.

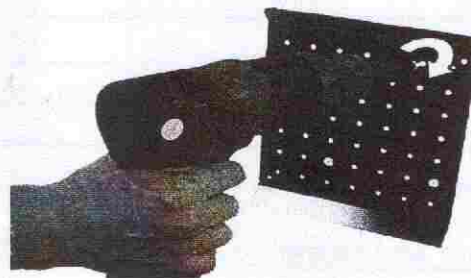
The diameter of the holes has to match the diameter of the blind rivets. Start the tool with left-hand rotation.



2. Insert a blind rivet into the nosepiece.



3. Set the blind rivet by right-hand rotation

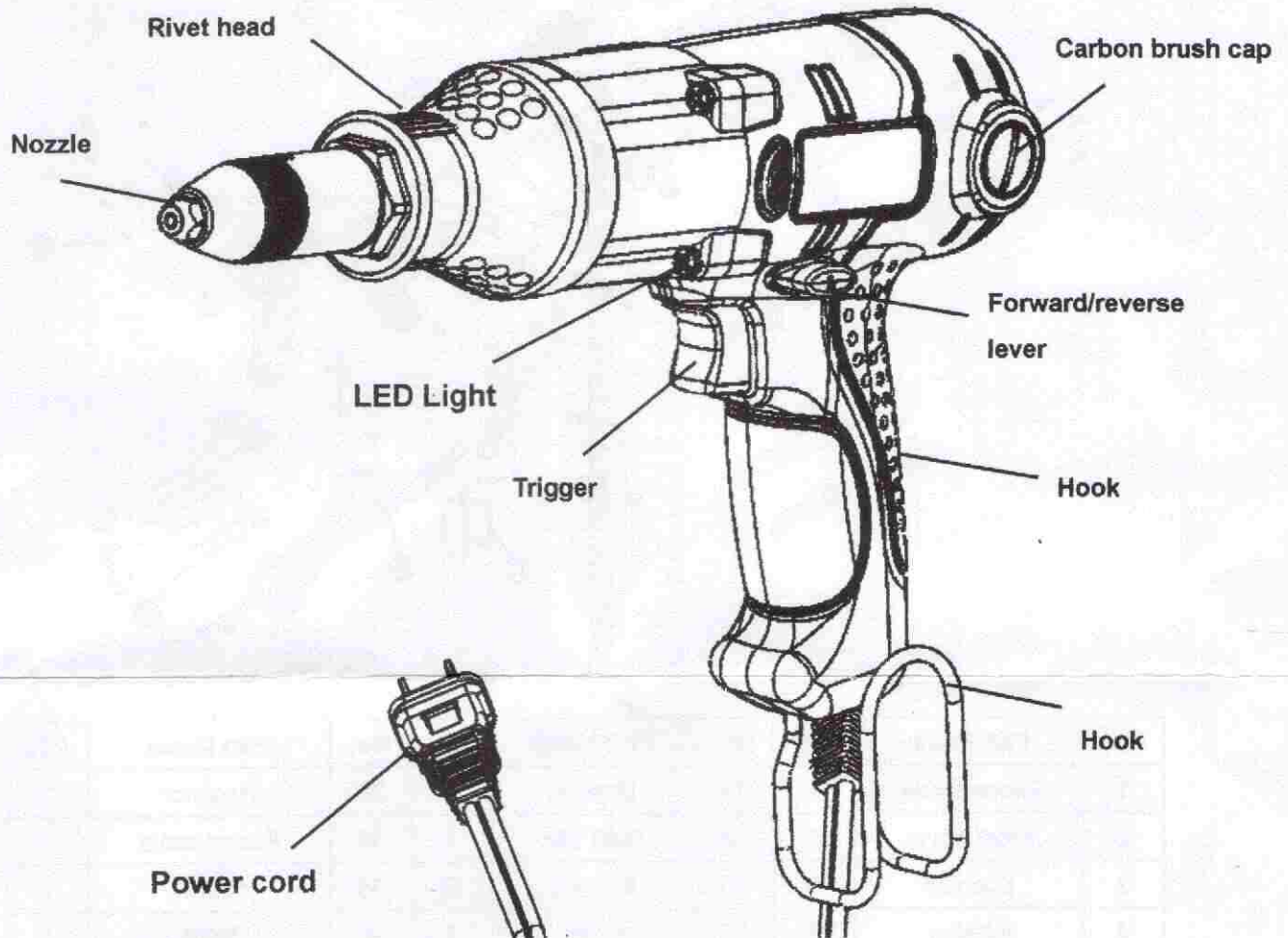


4. Left-hand rotation to expel the spent rivet mandrel.



3/16(4.8mm) Electric Riveter

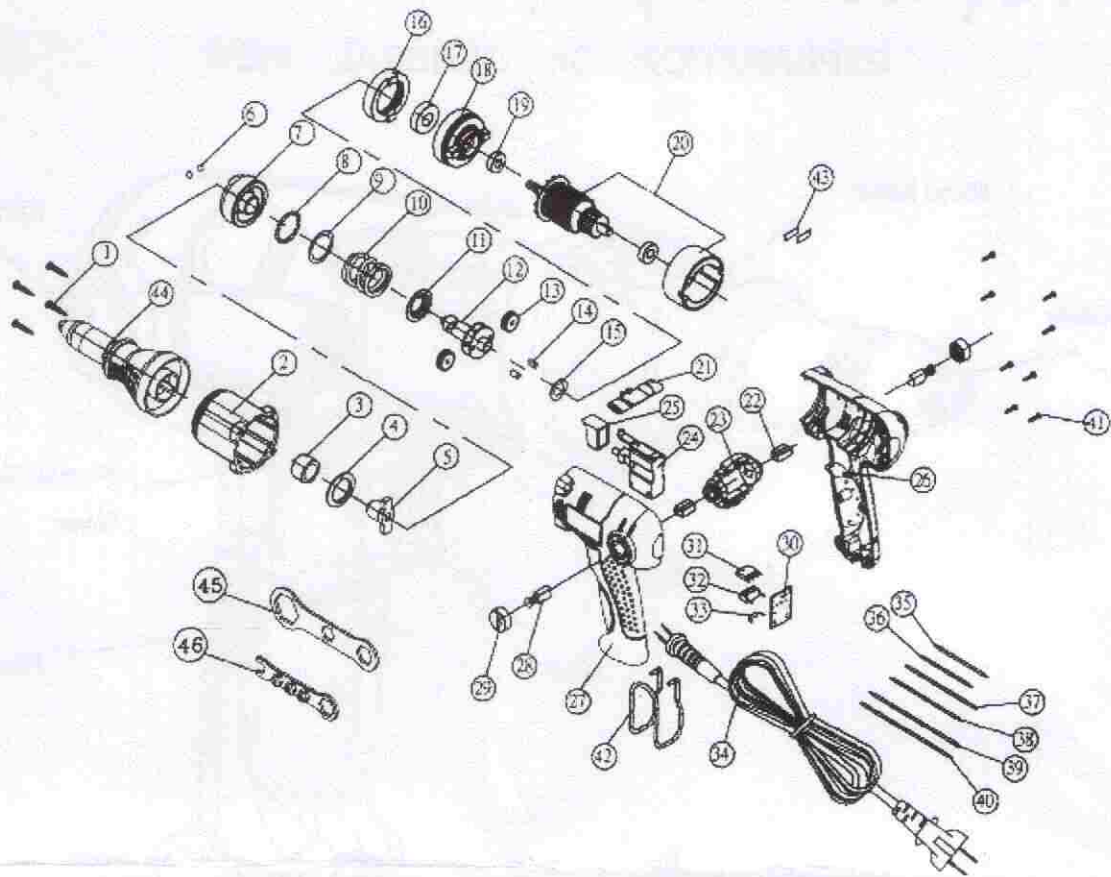
EXPLANATION OF GENERAL VIEW



SPECIFICATION

Traction Power	1650lbs = 750kgs
Insulation	Double insulation
Un-load rpm	0~2397
Rivet Spec.	2.4(3/32") 3.2(1/8") 4.0(5/23") 4.8(3/16")
Dimension	300mm*170mm*70mm
Weight (w/ cord)	1700g
Watt	2.5A(250W)

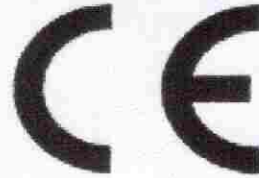
STRUCTURE CHART



No.	Part Name	Qty	No.	Part Name	Qty	No.	Part Name	Qty
1	Cross screw	4	17	Bearing	1	33	Resistor	1
2	Front cover	1	18	Gear box	1	34	Power cable	1
3	Bushing	1	19	Bearing	2	35	Wire	1
4	Washer	1	20	Motor	1	36	Wire	1
5	Shaft	1	21	Forward/Reverse lever	1	37	Wire	1
6	Steel ball	2	22	Carbon sleeve	2	38	Wire	1
7	Hammer	1	23	Carbon base	1	39	Wire	1
8	Steel ball	28	24	Switch	1	40	Wire	1
9	Washer	1	25	Switch button	1	41	Cross screw	8
10	Spring	1	26	Housing (Bottom)	1	42	Hook	1
11	Spring seat	1	27	Housing (Top)	1	43	Sponge	2
12	Shaft	1	28	Carbon brush	2	44	3/16Rivet attachment	1
13	Planet gear	2	29	Carbon cap	2	45	head wrench	1
14	Bearing	2	30	PCB	1	46	Nozzles wrench	1
15	Washer	1	31	Bridge rectifier	1			
16	Gear ring	1	32	Capacitor	1			

AIRPRO INDUSTRY CORP.

EC DECLARATION OF CONFORMITY



We declare under our sole responsibility that the product designated in this Declaration complies with the following specifications and bears CE mark in accordance with the provisions of the Electromagnetic Compatibility (EMC) Directive 89/336/EEC as amended by Directives 92/31/EEC and 93/68/EEC within CE marking requirement.

Standards:

EN55014-1:2002

EN55014-2:2001

EN61000-4-2: 2001

EN61000-4-3: 2002

PRODUCT DESCRIPTION: ELECTRIC RIVETER SET

Model Number: CRG230V

Vincent Wu of QA DEPT

Place and Date of issue

AIRPRO INDUSTRY CORP.

2F-3, 158, Kancheng Rd., Pachiao City, Taipei Hsien, Taiwan R.o.c. August 01, 2008